



iVigilo[®]
VideoSuite

User guide V 1.0

Main menu

Top controls

Main operating mode toggle. Switches between Video camera (Camera icon), Time-lapse (Clock icon) and Broadcast (Globe icon) modes.

Push volume buttons to start- or stop recording

Switch between front or back camera of device

Turn flashlight ON/OFF. This button only appears on devices equipped with a flashlight.

Exposure point. Can be set by tap and drag gesture.

Focus point. Can be set with one tap gesture on the screen.



Main menu

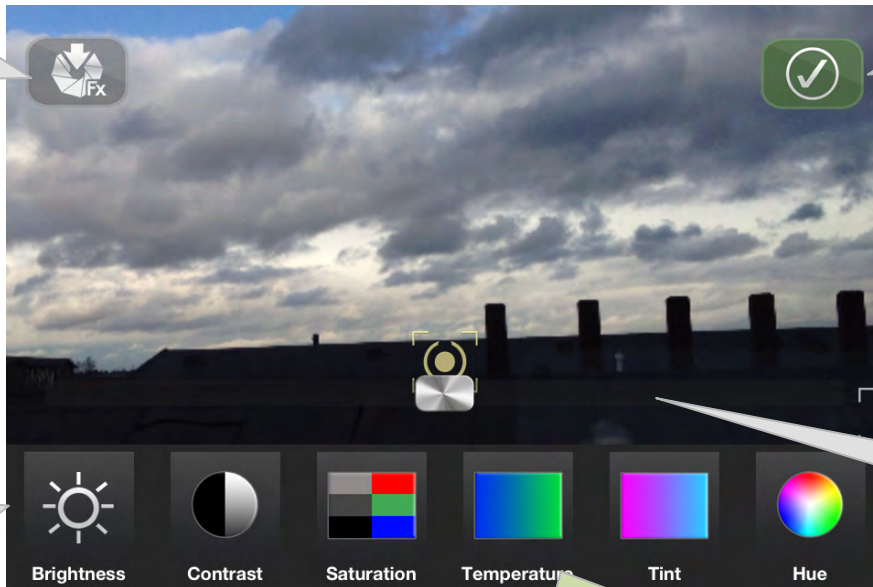
Bottom controls



Main menu

Video FX

Button to save the actual effect settings as a user defined effect.



Button to apply the actual effects to the live camera signal.

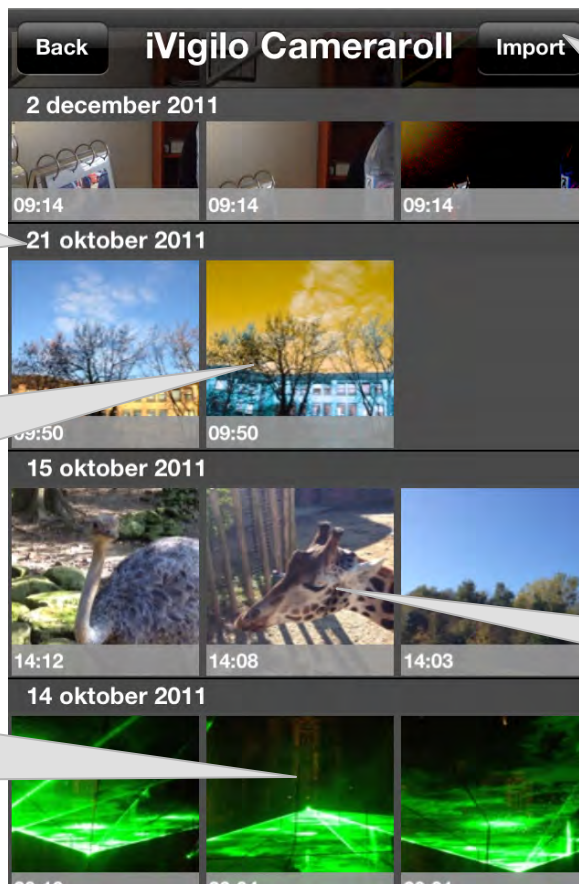
Overview of available Filters, Predefined effects and User effects.

Slider to adapt the value of the chosen filter.

Applying effects in real time on live video is very intensive. Depending on your device or chosen video quality this will give good or not so good results. Therefore Video Suite provides the possibility to apply effects in real-time on the live camera signal or after the recording on the existing video. This is called post processing.

You should play around and experiment what are the best settings for your device.

Camera roll



All videos are stored chronologically on the date they were recorded.

When an effect is applied to an existing video, the “Effect video” will be stored on the same date as the original.

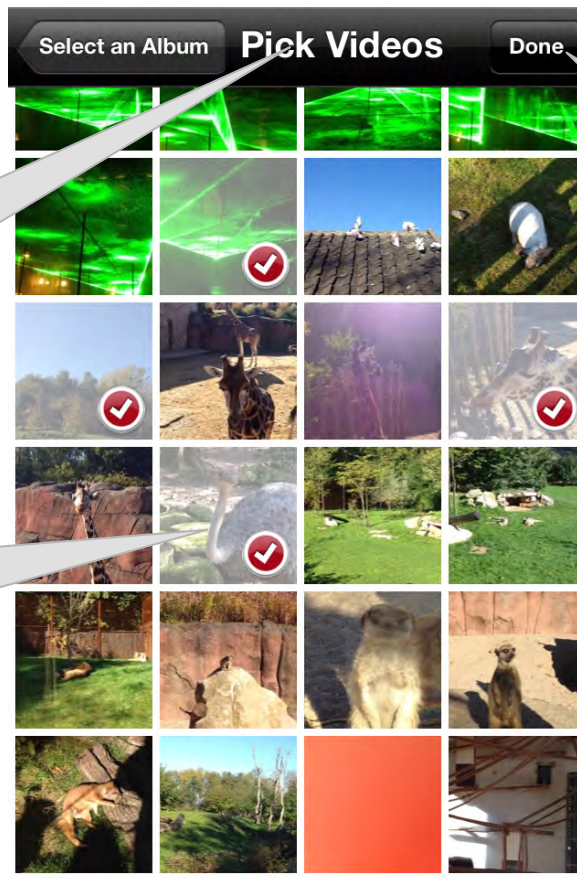
Videos within one date can be scrolled from left to right and vice versa.

By clicking the Import button, videos can be imported from the device Camera roll. This can be used to apply effects to videos which have been recorded with another program.

Tapping a video will open up the detail view for that video.

Camera roll

Import



The import function shows all videos which are present in the device camera roll. All these videos can be imported.

Multiple videos can be selected at the same time for importing.

By clicking the done button, the selected videos will be imported from the device camera roll into Video Suite. The original videos remain in the device camera roll.

Camera roll

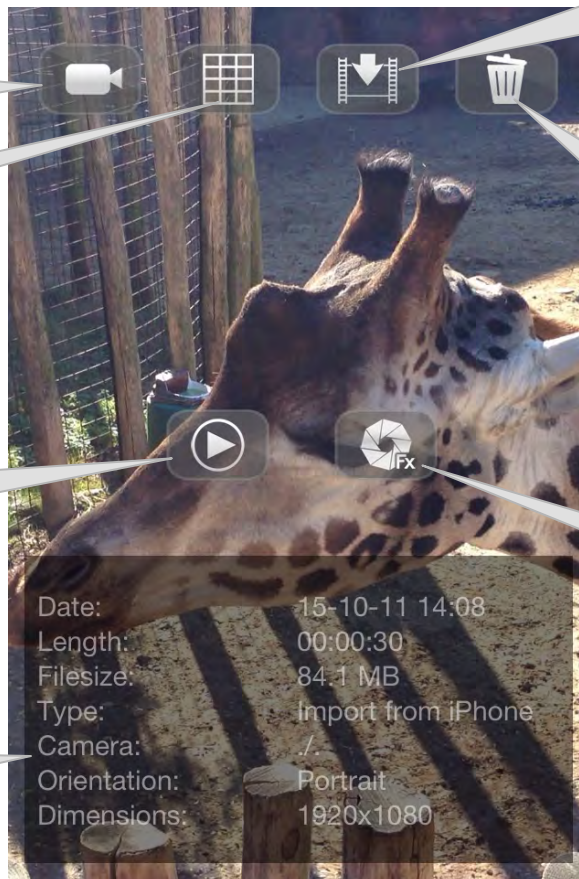
Detail view

This button goes directly back to the Main view.

This button goes back to the Video Suite camera roll.

This button plays the selected video.

Detailed information about selected video



This button will store the selected video in the device Camera Roll and delete it from Video Suite.

Clicking the Trashcan to delete the selected video from iVigilo Video Suite.

Button to enter the Video FX menu in Post processing mode. This means that all Video FX will be applied on the selected video.

Camera roll – Detail view

Video FX

Button to store actual effect settings as a User effect.



This button cancels all effects settings and returns to the Detail view.

Button to apply the actual effects to the selected video. The resulting video will be stored in Video Suite.

Overview of available filters, pre defined effects and user effects.

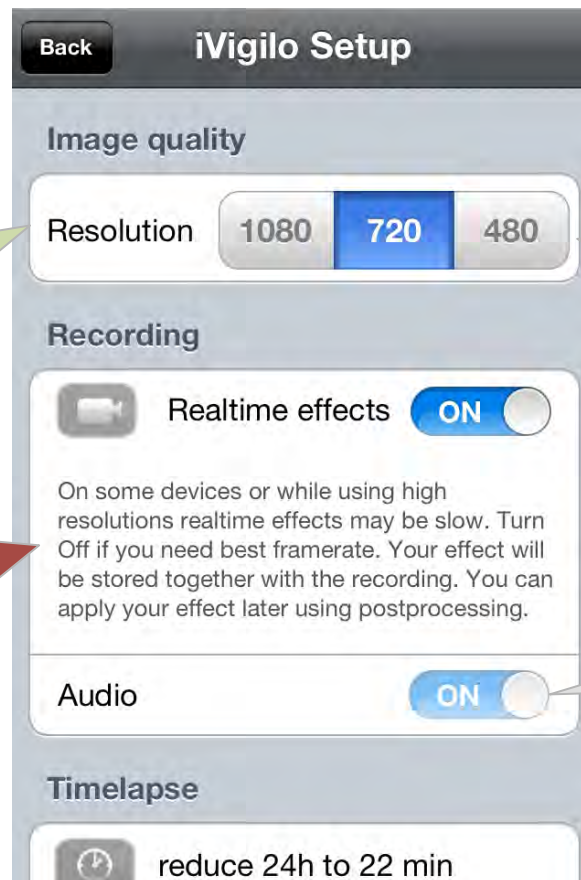
Slider to change the value of the selected filter. In this example Saturation is selected.

Setup

Image quality / Recording

HD quality choices is dependent on device. E.g. iPhone 4S is only device to support 1080P at the moment.

Note:
Performing Video FX is a processor intensive task. Not all devices are capable of doing Video FX in REALTIME on the signal. In case you notice not smooth recording turn Real-time effects OFF and apply the Video FX in Post processing.



Button to select in which HD quality video will be recorded. The highest quality but also the largest file size is 1080P. The lowest is 480P.

Switch to turn Audio recording ON/OFF.

Setup

Timelapse, Webcam, Effects

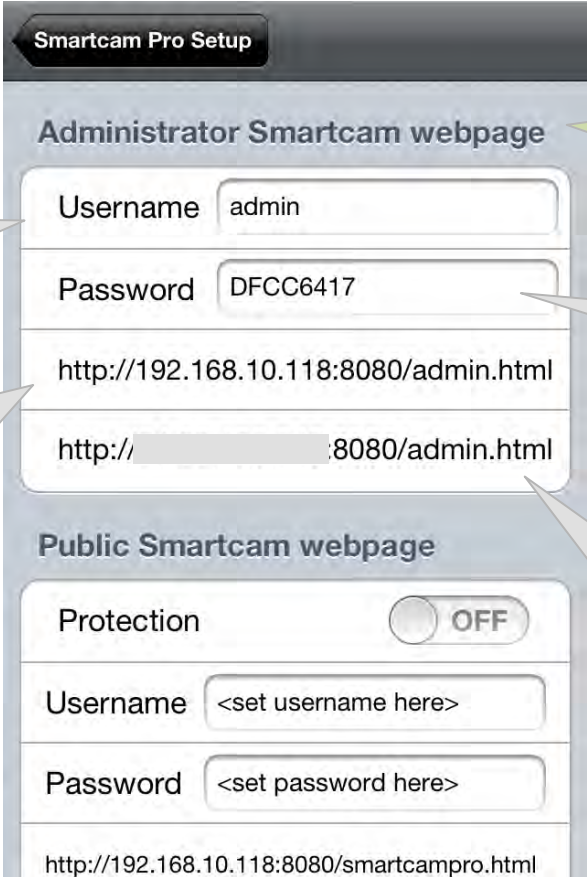


Button to enter the Webcam settings menu.

Button to enter the User effects menu.

Slider to specify the Time-lapse compression, in a reduction of 24 hours in x minutes. The largest compression is 24 hours in five minutes. This means a frame will be recorded every five seconds.

Setup – Webcam *Administrator webpage*



Smartcam Pro Setup

Administrator Smartcam webpage

Username

Password

Public Smartcam webpage

Protection OFF

Username

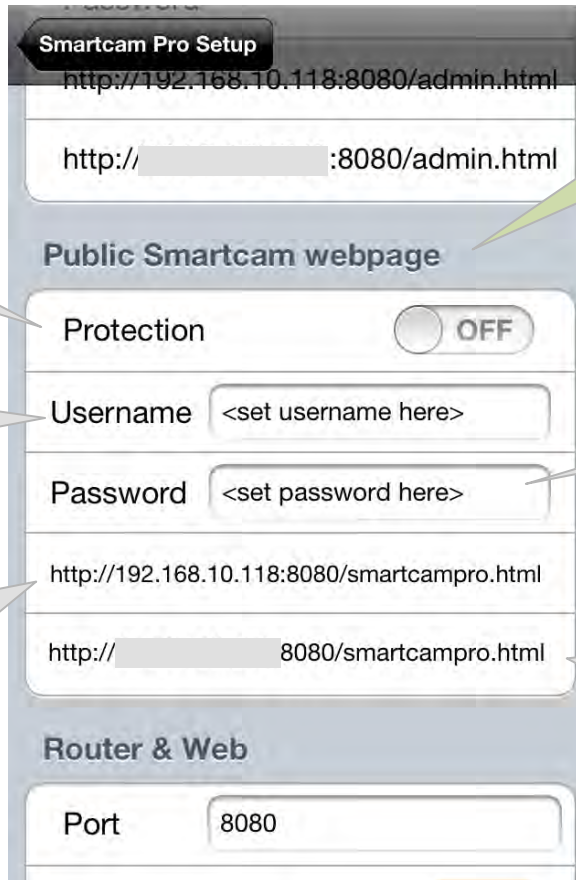
Password

Callouts:

- Green callout:** In the menu you set details for the Administrator webpage of Smartcam Pro.
- Grey callout 1:** Specify the username for the administrator website.
- Grey callout 2:** Specify the password for the Administrator website.
- Grey callout 3:** Local network address at which the Administrator webpage can be found. Type this address into any browser and you will see the live stream and can control from remote certain functions of Smartcam Pro.
- Grey callout 4:** External (Internet) address at which the Administrator webpage can be found. Type this address into any browser and you will see the live stream and can control from remote certain functions of Smartcam Pro.

Setup – Webcam

Public webpage

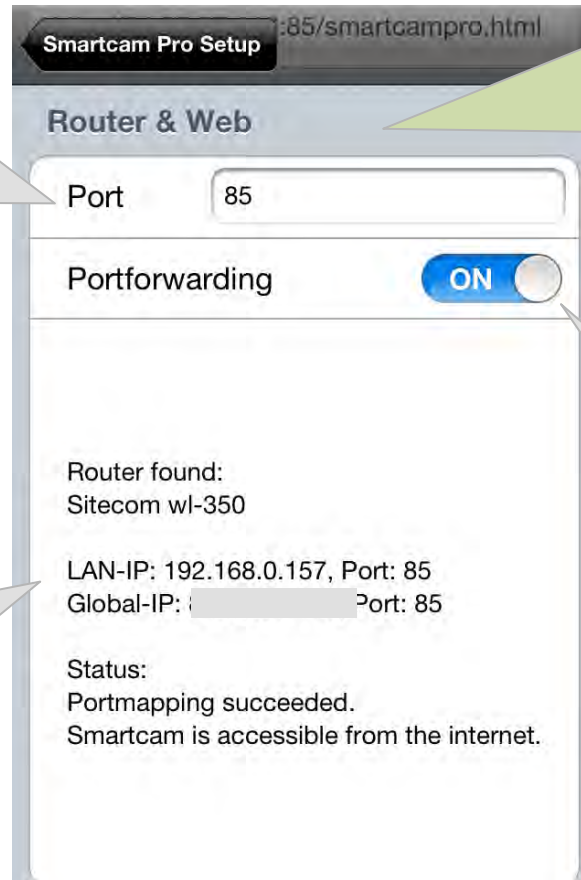


The image shows a screenshot of the 'Smartcam Pro Setup' web interface. The interface is titled 'Smartcam Pro Setup' and contains several sections. At the top, there is a URL field with 'http://192.168.10.118:8080/admin.html'. Below this is another URL field with 'http:// :8080/admin.html'. The main section is titled 'Public Smartcam webpage' and contains a 'Protection' toggle switch set to 'OFF'. Below the toggle are two input fields: 'Username' with the placeholder '<set username here>' and 'Password' with the placeholder '<set password here>'. Below these are two more URL fields: 'http://192.168.10.118:8080/smartcampro.html' and 'http:// :8080/smartcampro.html'. The bottom section is titled 'Router & Web' and contains a 'Port' input field with the value '8080'. There are five callout boxes with arrows pointing to specific parts of the interface: 1. A grey callout box on the left points to the 'Protection' toggle, containing the text: 'Turn protection ON/OFF. When ON, the public website will require user-id and password.' 2. A grey callout box on the left points to the 'Username' field, containing the text: 'Specify the username for the Public website.' 3. A grey callout box on the left points to the 'Password' field, containing the text: 'Specify the password for the Public website.' 4. A green callout box on the right points to the 'Public Smartcam webpage' section header, containing the text: 'In this menu you set details for the Public webpage of Smartcam Pro.' 5. A grey callout box on the right points to the 'http:// :8080/smartcampro.html' field, containing the text: 'External (Internet) address at which the Public webpage can be found. Type this address into any browser and you will see the live stream.'

Setup – Webcam Router & Web

This field specifies the port number at which Smartcam Pro can be reached. Can be set manually or will be automatically provided by the built-in port forwarding routines.

Status information regarding the port forwarding can be found here.



Smartcam Pro Setup :85/smartcampro.html

Router & Web

Port

Portforwarding

Router found:
Sitecom wl-350

LAN-IP: 192.168.0.157, Port: 85
Global-IP: [redacted] Port: 85

Status:
Portmapping succeeded.
Smartcam is accessible from the internet.

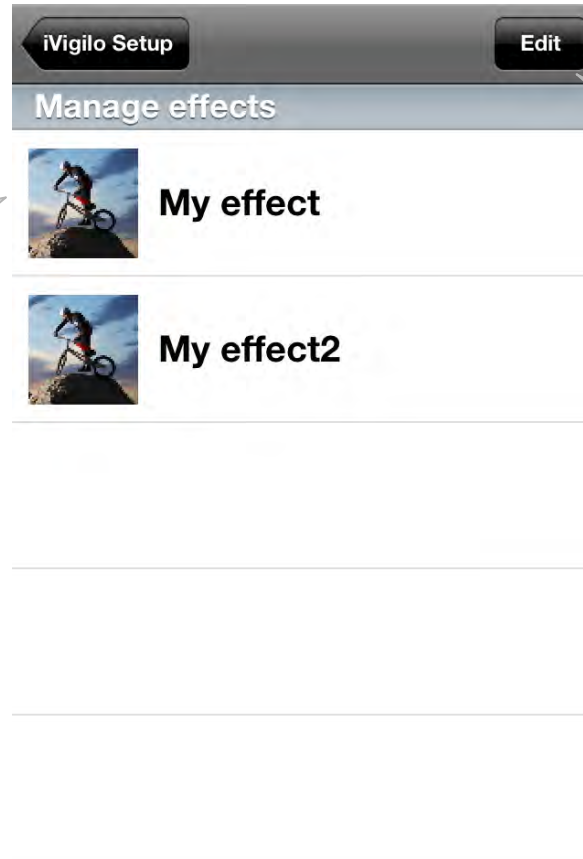
In this menu you specify the port forwarding settings for Smartcam Pro.

In order to access the camera stream from the Internet, this function need to be turned on. You also need to be in a network with a router which supports port forwarding.

Turn Port forwarding ON/OFF. When ON, Smartcam Pro will try to identify a router on the network and define the port from which Smartcam Pro can be accessed through the Internet. This will work with most modern routers.

Setup – Effects

Delete user effects



All User defined effects show up here in this list.

By clicking the Edit button, User defined effects, can be deleted.